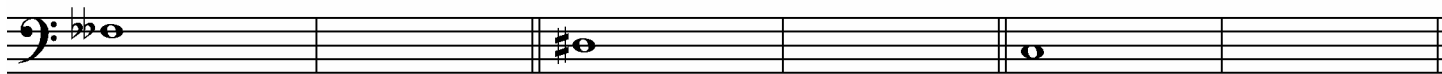
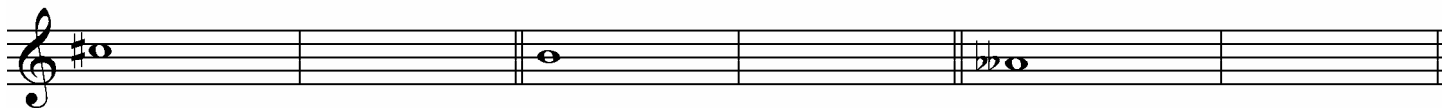
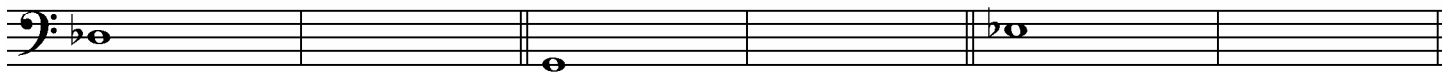


NAME: \_\_\_\_\_

## ENHARMONICISM

1. Supply one note which is enharmonically equivalent to the given note in the space provided.



2. Recall that a "theoretical note" is one whose inflection (type of accidental) is any number of chromatic half steps (augmented primes) beyond a double-sharp or double-flat (for example  $C^{X\#}$ ).

For almost every *non-theoretical* note there are two enharmonically equivalent *non-theoretical* notes. For example, for C natural there is both B-sharp and D-double-flat. However, there is one pair of *non-theoretical* notes which does not have a third *non-theoretical* enharmonic equivalent. What is that pair?

Why?